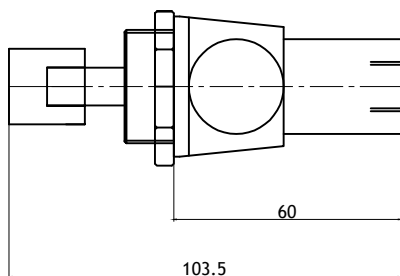
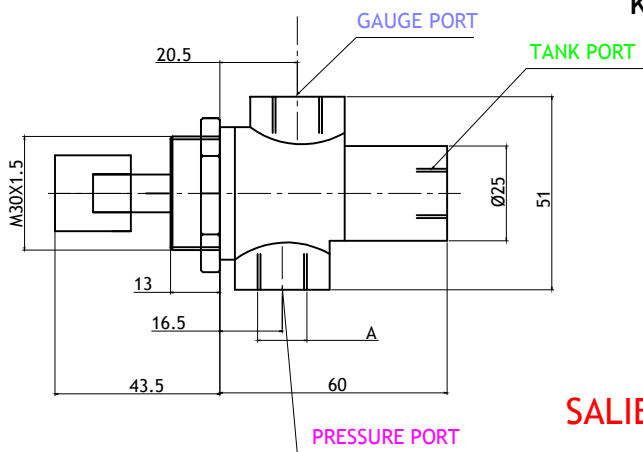
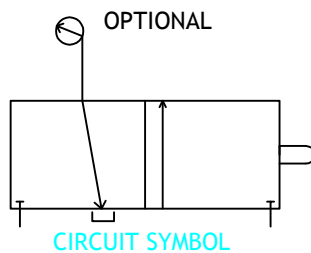




## SINGLE STATION GAUGE ISOLATORS

They protect the gauges from damaging pressure surges, Hydraulic Shock and mechanical Vibrations. Fluid is completely isolated from the gauge until the knob is pressed.

By pressing the knob, fluid is connected directly to the gauge port giving instant and Accurate readings on the gauge. As the knob is released, the spring loaded valve closes automatically connecting the Gauge Port to drain and Completely blocking the cylinder port. In operation, an orifice in the gauge port acts as a partial snubber, protecting the gauge from the initial surge of fluid as the knob is pressed.



## SALIENT FEATURES

- Isolates Gauge from system pressure.
- Maximum pressure 210 bar.
- Panel / Line Mounting.
- Working temperature Range: -20° C to 80° C.
- High grade casting.
- Low Drain Leakage Characteristics.
- Minimum force required to operate.
- Balanced spool.

A-ALL PORTS ARE 1/4"