

MAGNETIC PROXIMITY SWITCH

..... for OEMs



PRINICIPLE:

Magnetic polarity sensitive Reed switches are located inside switch housing and are activated by permanent magnet contained in the piston of oil level gauge.

CONSTRUCTION:

These switched are housed in nickle plated brass housing, semi translucent acrylic face and brass nuts.

APPLICATION:

To be used with our oil level guage series instruments. In case theses switches are used other than above mentioned application, Compatibility to be verified before selecting the same. Please consult us for further information on application other than oil level gauges series instruments.

PROTECTION PROVIDED:

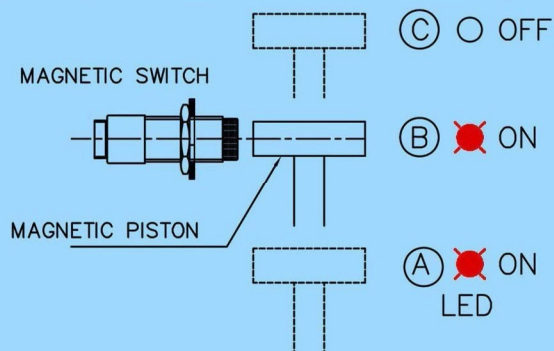
These switches are provided with over voltage Protection upto +40V DC, overcurrent protection upto 10 sec(nom), Reverse polarity protection are standard features.

SPECIFICATION:

Voltage : +18...+30V DC
Current : 200 mA.
Switch type : **PNP** or **NPN**

Switch Action : For 18X__ A - FL - __

Switch to Close on Falling Liquid Level.

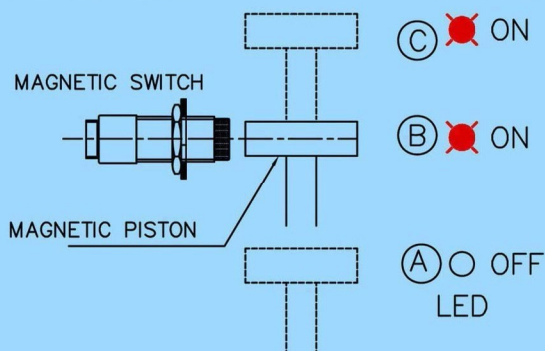


Switch to Close on Piston Moving From (C) (B) (A) Direction @ (B) and Remains Close as Long as Piston is below (B)

Switch to Open on Piston Moving From (A) (B) (C) Direction @ (B) and Remains Open as Long as Piston is above (B)

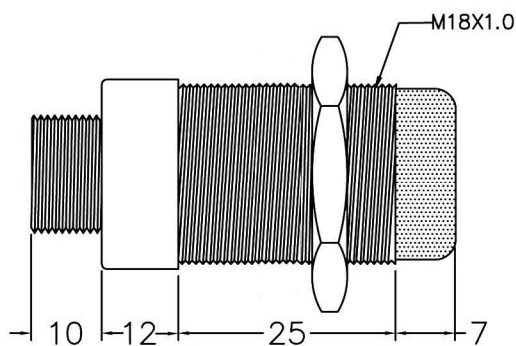
Switch Action : For 18X__ A - RL - __

Switch to Close on Raising Liquid Level.



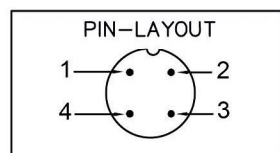
Switch to Close on Piston Moving From (A) (B) (C) Direction @ (B) and Remains Close as Long as Piston is above (B)

Switch to Open on Piston Moving From (C) (B) (A) Direction @ (B) and Remains Open as Long as Piston is below (B)

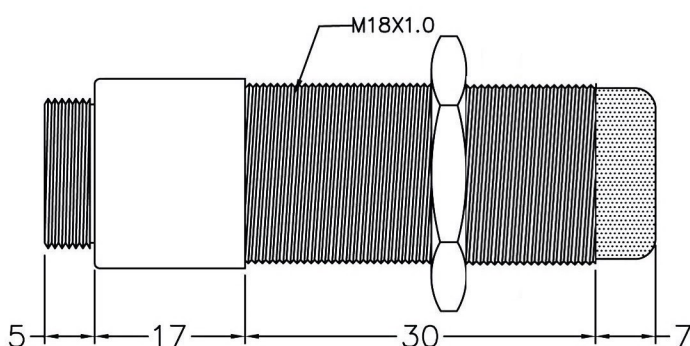


Note: -

Mating Connector & Cable order separately

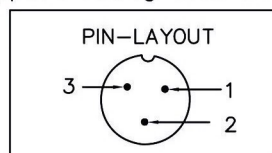


1. +VDC Brown
2. No use
3. 0 VDC Blue
4. Output Black



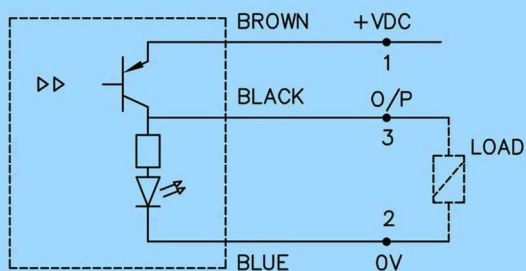
Note: -

Mating Connector With 2 M Free Cable is supplied Along with Switch

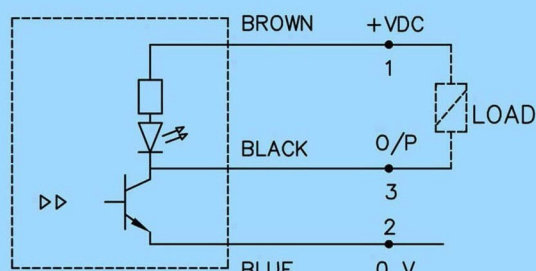


1. +VDC Brown
2. 0 VDC Blue
3. Output Black

PNP



NPN



ORDERING INFORMATION:

18x__ A - - - -

M16 Size Connector **16**
M12 Size Connector **12**

PNP Transistor Output - **PNP**
NPN Transistor Output - **NPN**

2.5 mtr 3 Core free cable
5.0 mtr 3 Core free cable

FL Switch to close on Falling liquid level
RL Switch to close on Raising liquid level

since continuous development is our policy, the above specification and details may change without prior notice

CT-003/MPS/01-19/R 01

VIDYUTH ENTERPRISES

#387/41, Bikasipura Main Road, Yelachenahalli,
(Near Delhi Public School) Bangalore - 560062.
Ph : 080-26860013 / 0014 / 1056 - Mob : 9886715952
email : info@vidyuth.co.in - manufacture@vidyuth.co.in
web : www.vidyuth.co.in

