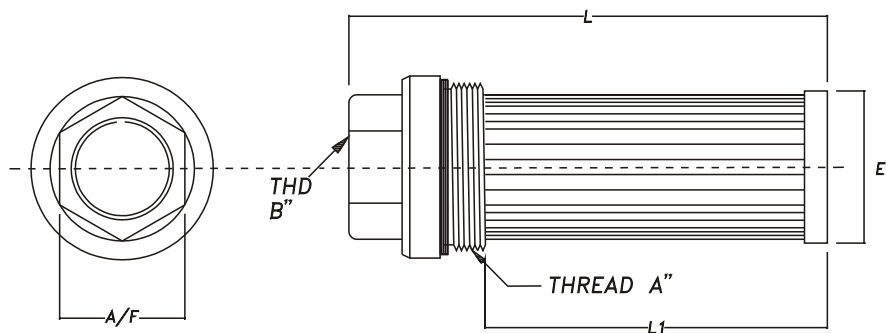
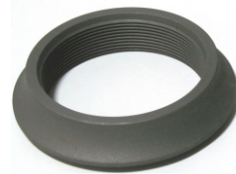


TANK MOUNTED STRAINER - TMA



- TANK MOUNTED REUSABLE STRAINER
- SIDE WALL OR TANK TOP MOUNTING
- FLOWS TO 40 GPM (160 LPM)
- STAINLESS STEEL PLEATED MEDIA
- 100 MESH (149 MICRON) STANDARD
- DIE CAST ALUMINIUM BUSHING WITH 'O' Ring



Series	Bushing Size Dim. A x Dim. B UN (2A) X UN (2B)	LPM / GPM Rating	Screen Area SQ. IN.	Dimensions			WT KGS	
				L	L1	E		
TMA - 03	1-1/16"-12 x 3/4" - 16	12 / 3	30	101.6	67	20.0	31.5	0.10
TMA - 05	1-5/16"-12 x 3/4" - 16	20 / 5	54	137.0	102	28.5	31.5	0.12
TMA - 10	1-5/8" -12 x 1-1/16" - 16	40 / 10	90	208.0	172	36.0	38.0	0.18
TMA - 15	1-7/8" -12 x 1-5/16" - 16	60 / 15	120	208.0	172	42.0	46.0	0.23
TMA - 20	2-1/2" -12 x 1- 5/8" - 12	80 / 20	160	228.6	194	54.0	54.0	0.36
TMA - 30	3-3/8" -12 x 1- 7/8" - 24	120 / 30	230	223.5	184	78.0	63.0	0.55
TMA - 40	3-3/8" -12 x 2- 1/2" - 32	160 / 40	230	236.2	190	78.0	76.0	0.55

MODEL NO CHANGED WEF JAN 12

MODEL CODE : ASSEMBLY

TMA	- 15		- 149	- RB3
SERIES	SIZE	SAE STD THD A' - THD B'	µ MICRONS	OPTIONAL
TMA	03	12S - 08S	149 - SS 100 MESH STD	RB3 - 3 P.S.I. BYPASS VALVE (OMIT IF NOT REQD.)
	05	16S - 08S	125 - SS 120 MESH	
	10	20S - 12S	100 - SS 150 MESH	
	15	24S - 16S	074 - SS 200 MESH	
	20	32S - 20S	063 - SS 250 MESH	
	30	48S - 24S	Also - 30 / 60 MESH	
	40	48S - 32S	(OMIT IF STD).	

Recommended Weld Flange

To Be Ordered
Separately

TWF - 12 U

TWF - 16 U

TWF - 20 U

TWF - 24 U

TWF - 32 U

TWF - 48 U

TWF - 48 U

CONTACT FACTORY FOR OPTIONAL FEATURE